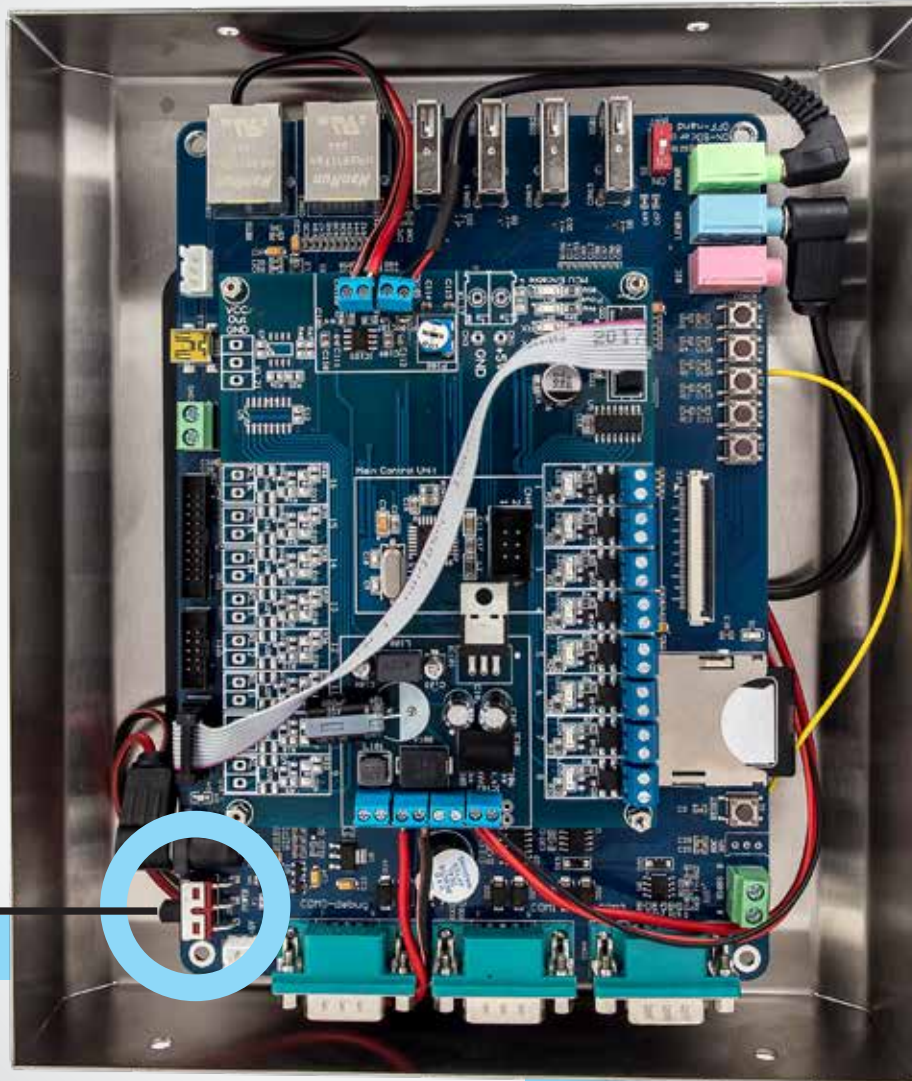




**FREQUENTLY ASKED QUESTIONS**  
**HOW TO SOLVE IT**

**01**

**I have installed  
talk2lift<sup>®</sup>  
but it doesn't work**



**POWER SWITCH**

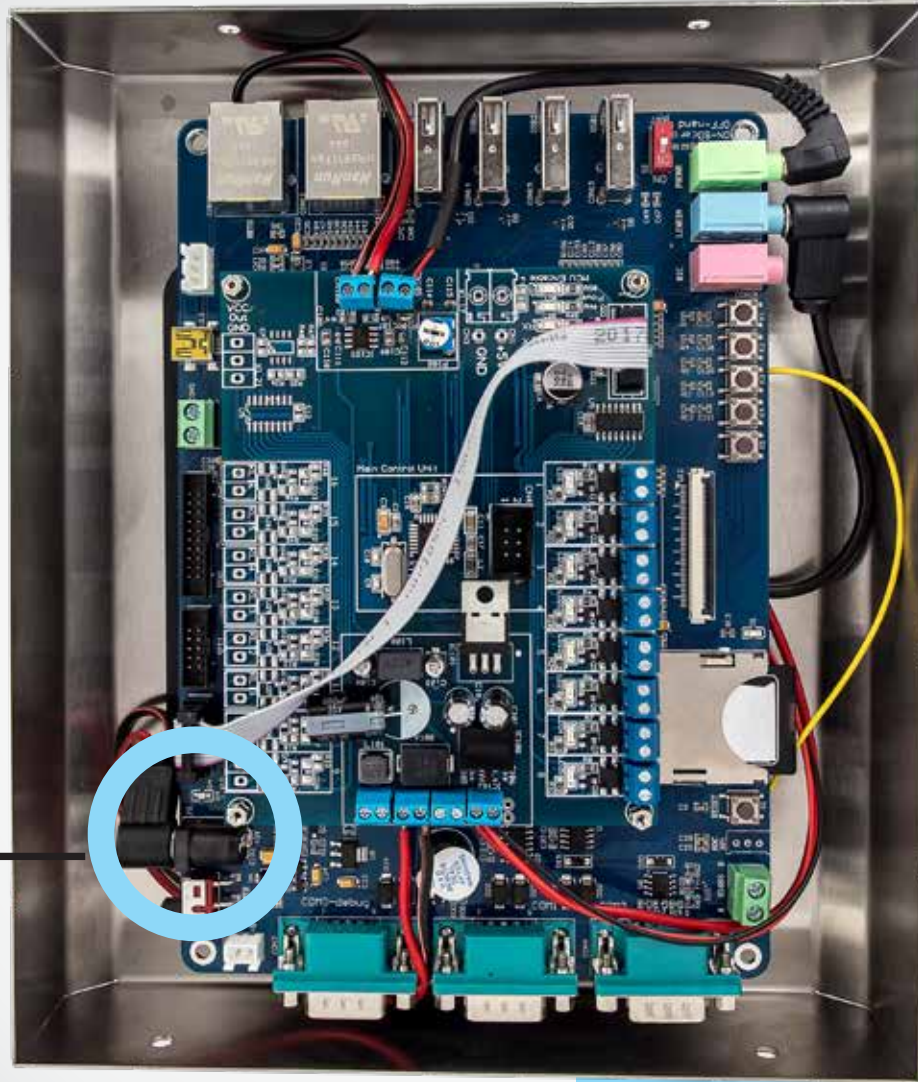
**MAKE SURE  
THAT THE  
POWER SWITCH  
IS LOCATED IN  
THE ON POSITION**

# 02

**the power switch is on  
but the device  
still doesn't work**



**POWER PLUG**



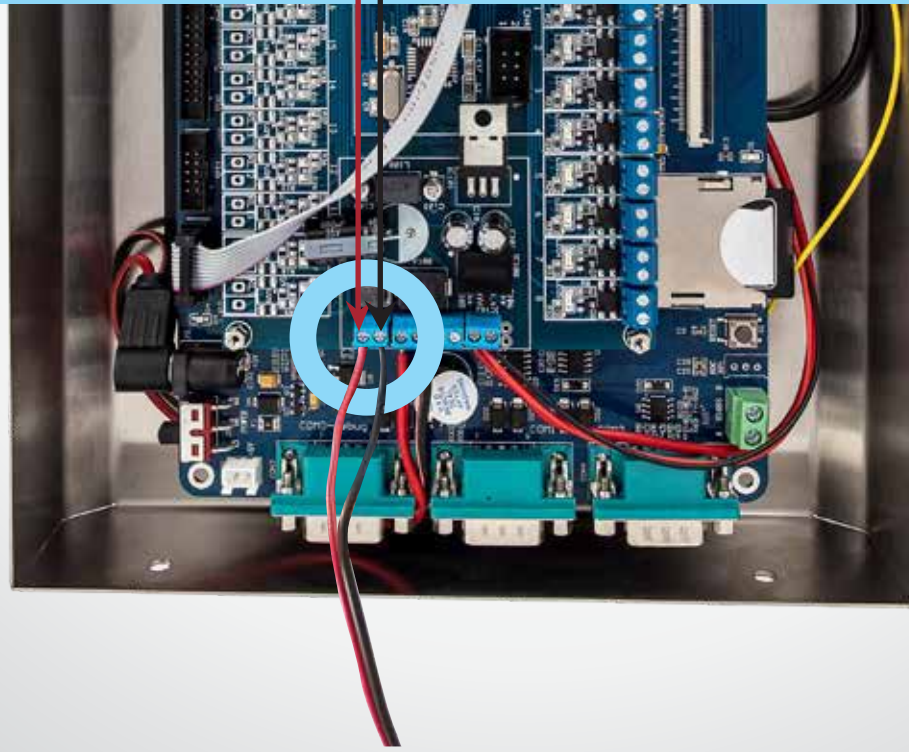
**MAKE SURE THAT  
THE PLUG  
FITS CORRECTLY**

**03**

**what's the right  
power supply?**



**ATTENTION!**  
**12-24V**



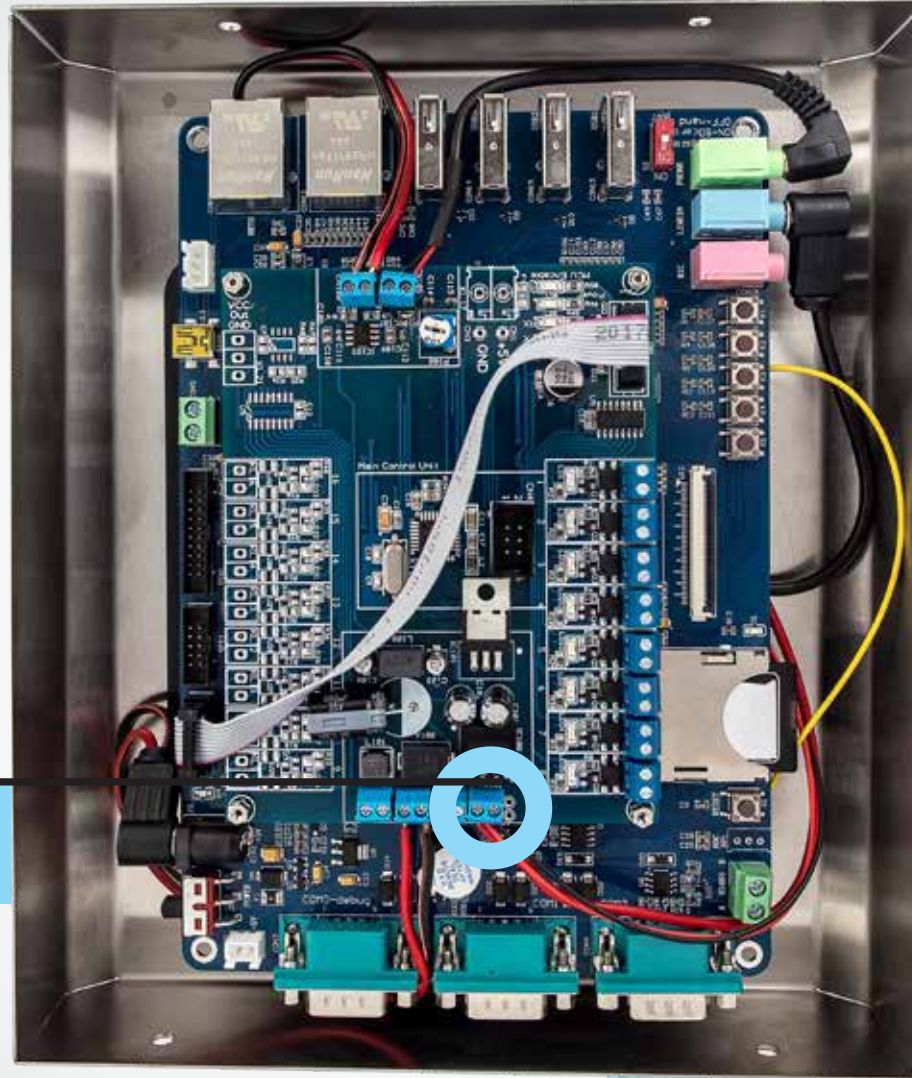
**04**

**talk2lift®**

**doesn't "understand" me**

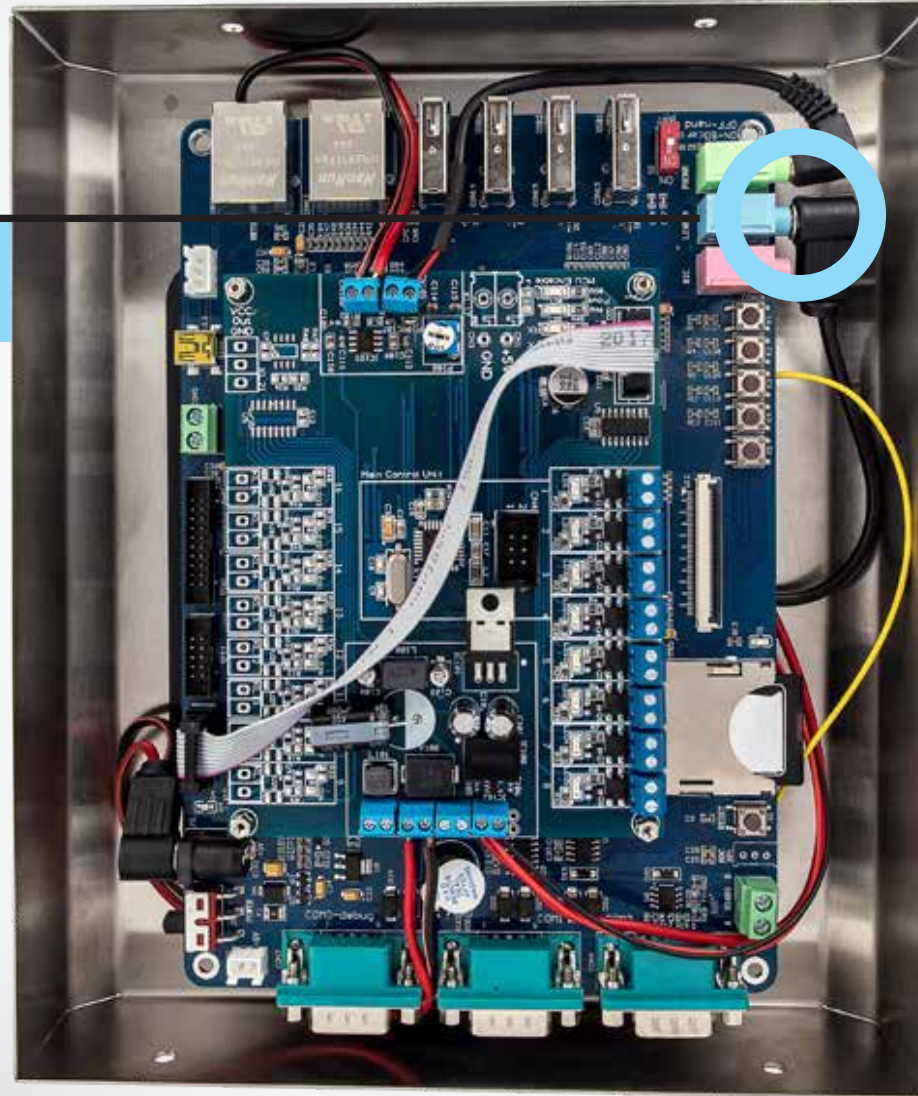


**CABLES OF  
SENSOR & MICROPHONE**



**STEP 01**  
**MAKE SURE THAT**  
**THE CABLES**  
**ARE WELL**  
**CONNECTED**

**MICROPHONE PLUG**

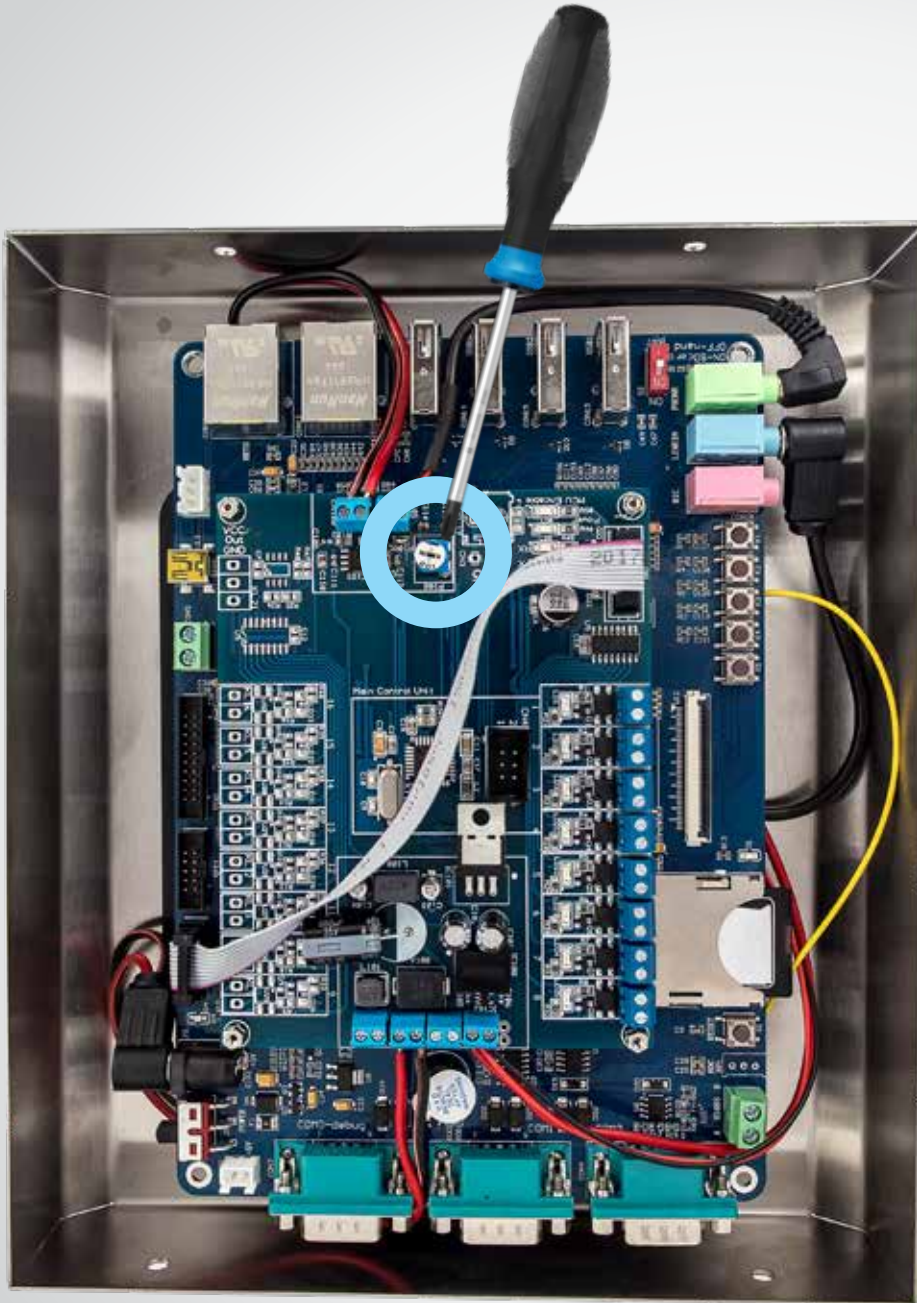


**STEP 02**  
**MAKE SURE**  
**THAT THE**  
**MICROPHONE PLUG**  
**FITS CORRECTLY**  
**ON THE CYAN GATE**

**05**

**the speaker sounds  
too low or too loud**



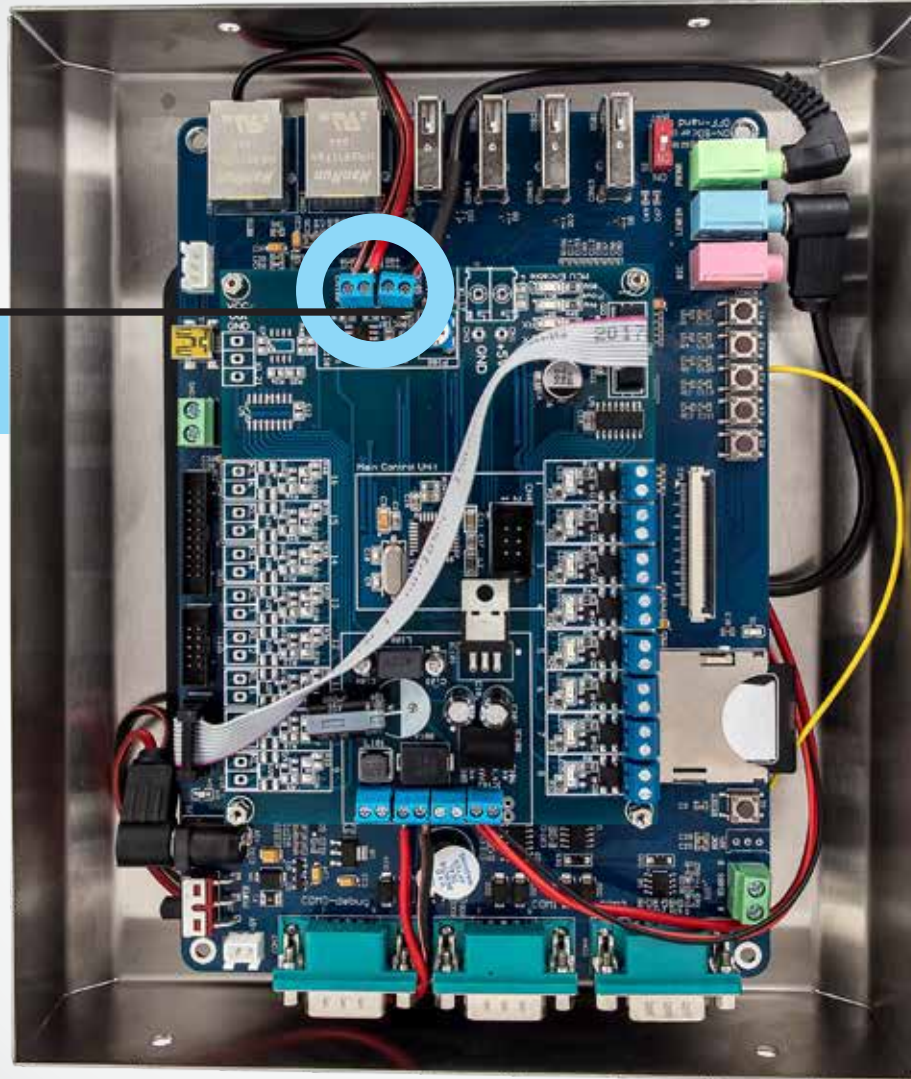


**USING A SCREWDRIVER  
ADJUST THE  
POTENTIOMETER TO GET  
THE DESIRED RESULT.  
TURN LEFT TO REDUCE  
& RIGHT TO INCREASE  
THE VOLUME.**

# 06

**the speaker is noisy  
making voice recognition difficult  
or not working at all**

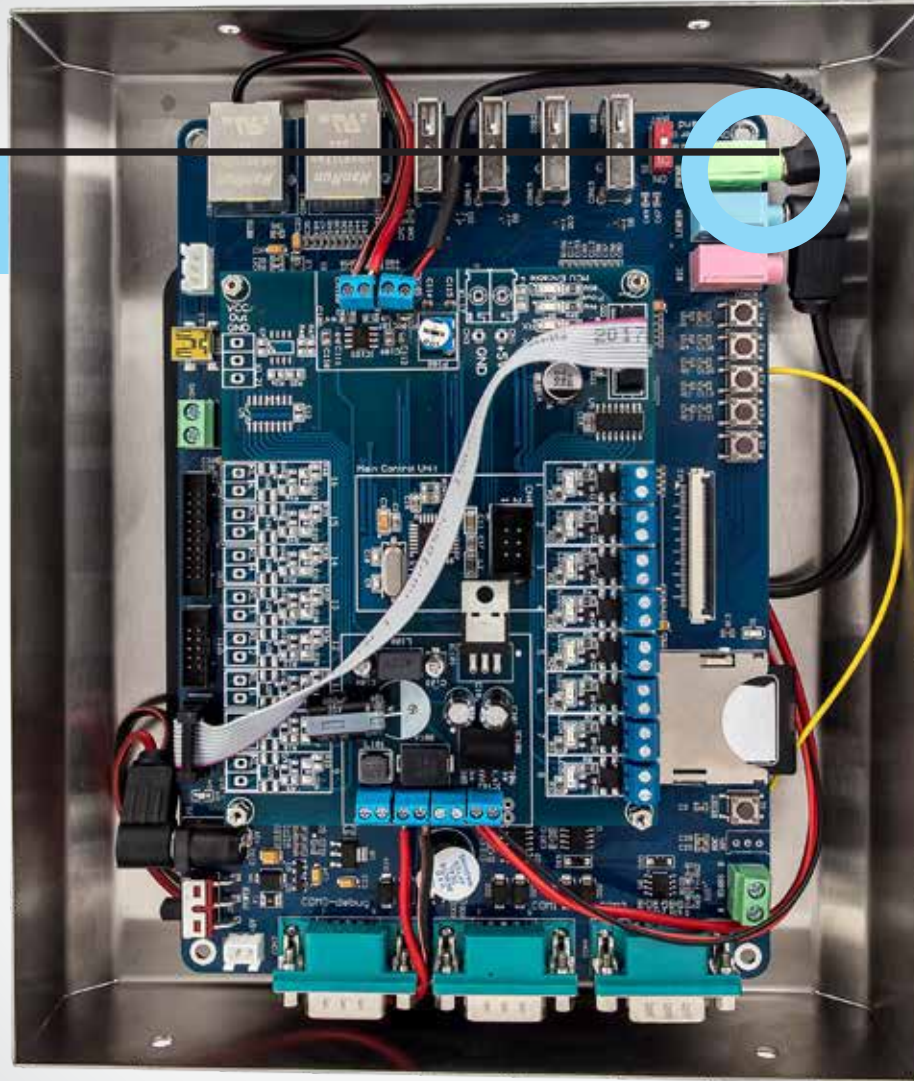
**SOUND WIRES**



**STEP 01**  
**MAKE SURE THAT**  
**THE CABLES**  
**ARE WELL**  
**CONNECTED**



**SPEAKER PLUG**

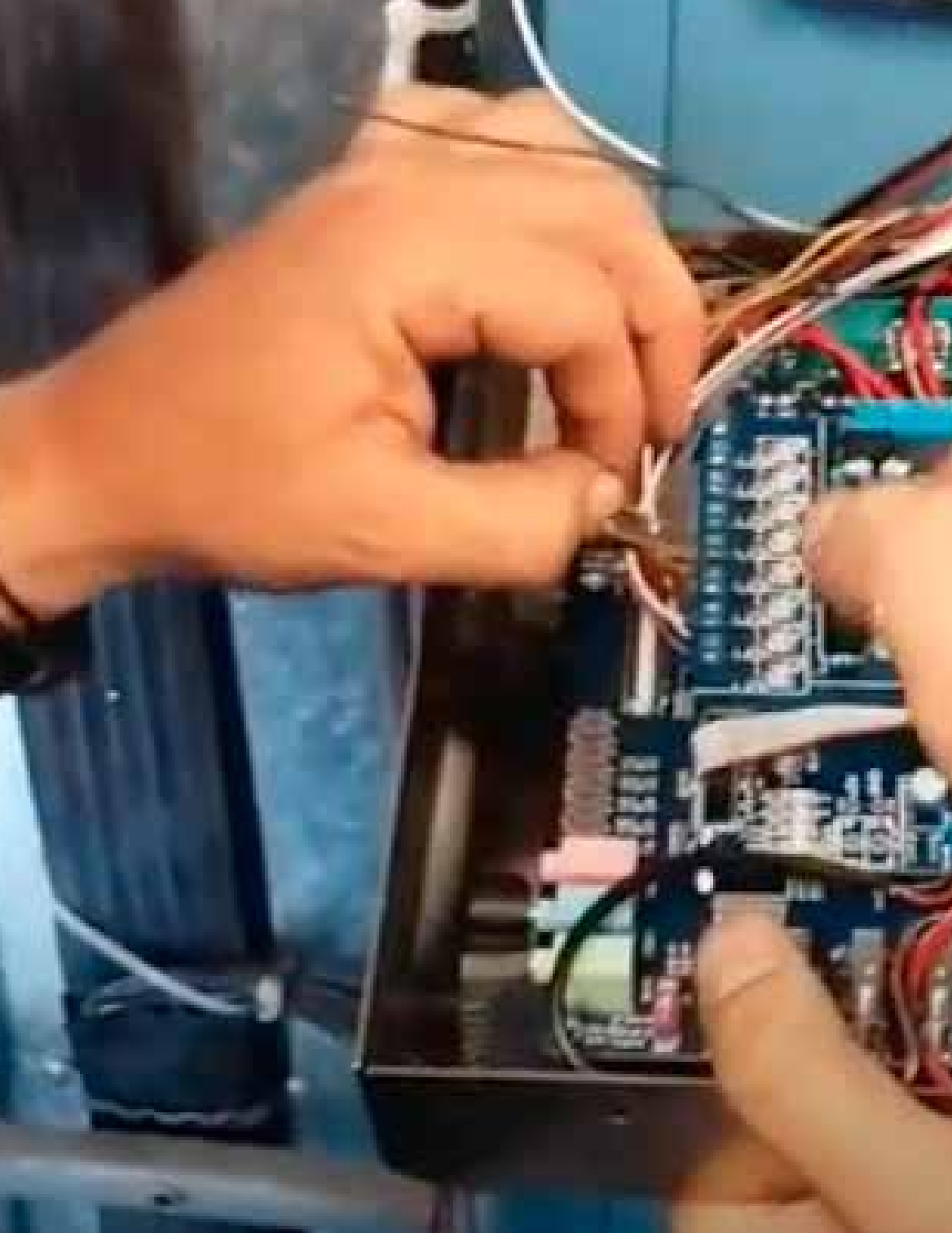


**STEP 02**  
**MAKE SURE**  
**THAT THE PLUG**  
**FITS CORRECTLY ON**  
**THE GREEN GATE**

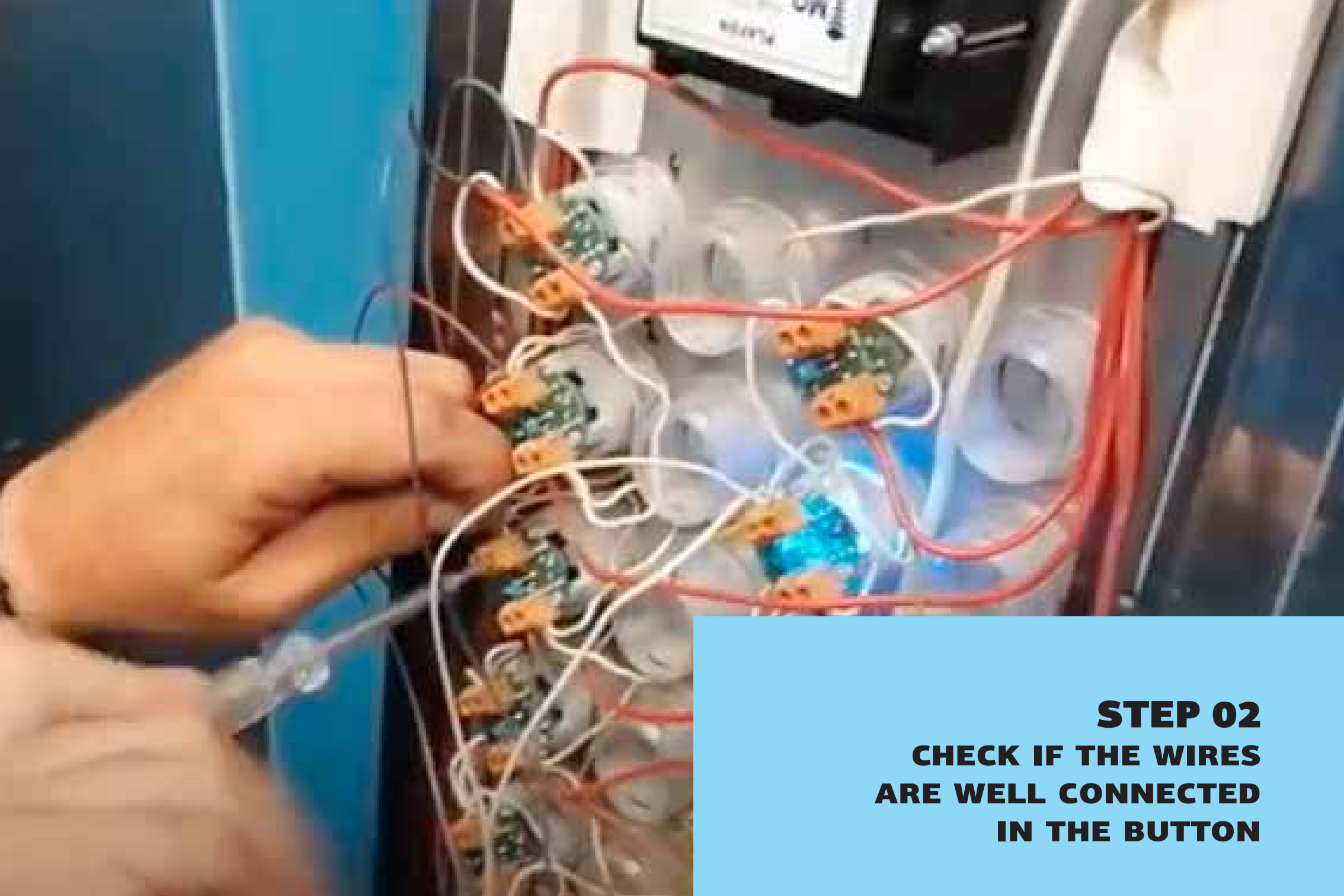


# 07

**I gave a voice command,  
& although the device responded  
the elevator button  
was not activated**



**STEP 01**  
**CHECK IF THE WIRES**  
**ARE WELL CONNECTED**  
**IN THE RELAY**



**STEP 02**  
**CHECK IF THE WIRES**  
**ARE WELL CONNECTED**  
**IN THE BUTTON**



**talk2lift®**

**[www.talk2lift.com](http://www.talk2lift.com)**